

NEUSPEED®

FRONT UPPER STRUT BAR PART # 35.10.69 INSTALLATION INSTRUCTIONS

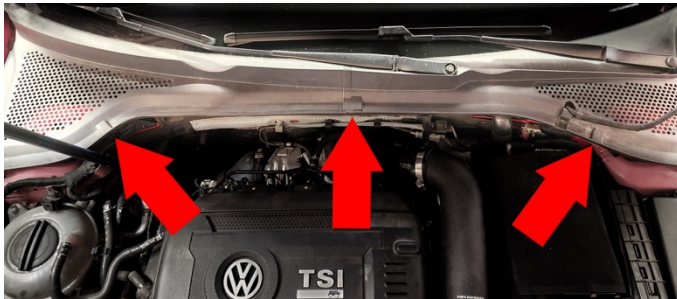
PARTS LIST: 1 – Billet bar 1 – Left Bracket 1 – Right Bracket
4 – M8 Bolts 4 – M8 Washers

TOOLS REQUIRED: 1 – M13 Socket or wrench 1 – M10 Socket or wrench 1 – M5 Hex Key

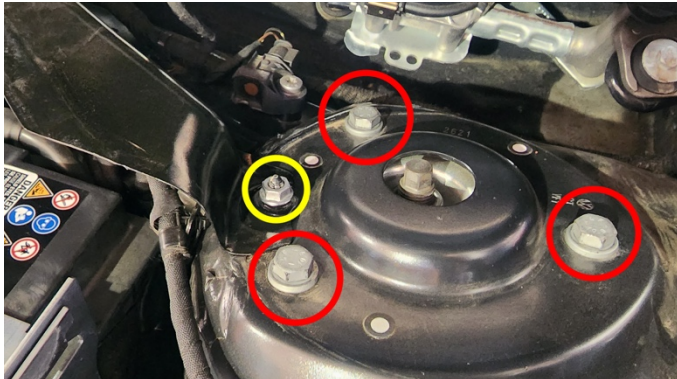
1. Park car on level surface, straighten front wheels, and engage parking brake.



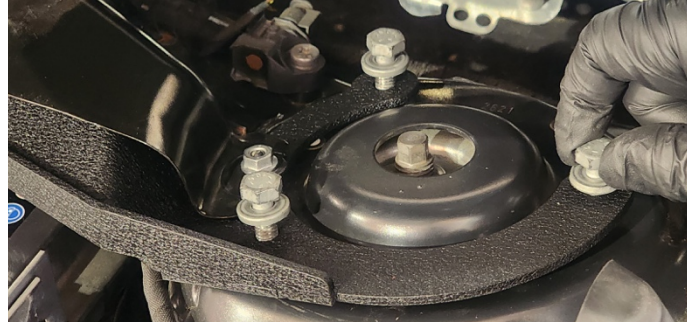
2. Remove hood weather strip.



3. MK7/7.5 only, pull to remove 3 clips (red arrows).



4. Lift plastic shroud to expose strut tower. Remove 3x strut mount bolts using M13 socket (red circles) and 1x firewall shroud nut (yellow circle) with M10 socket.



5. Install mounting brackets. The longer arm goes on left side of vehicle. Firewall shroud goes on top of bracket's base plate.
6. Reinstall factory bolts and nut loosely.
7. Repeat step 4 to 6 to the other side.



8. Slide the cross bar on from front side and loosely install the supplied mounting bolts & washers using M5 hex key.
9. Torque all bolts to 25 nm (18 ft-lb) starting with the strut mount then the bar ends bolts. Hand tight shroud nuts.
10. Reinstall weather strip to finish install process.

**NOTE: Do not move the vehicle at this state.
Doing so will potentially damage your vehicle.**

