



INSTALLATION GUIDE

CTS Turbo FMIC BMW N55
Plus Charge Pipe install
CTS-IT-805



20630 Mufford Crescent, Unit #309
Langley, British Columbia V2Y 2V9

www.CTSTURBO.com

TOOLS REQUIRED

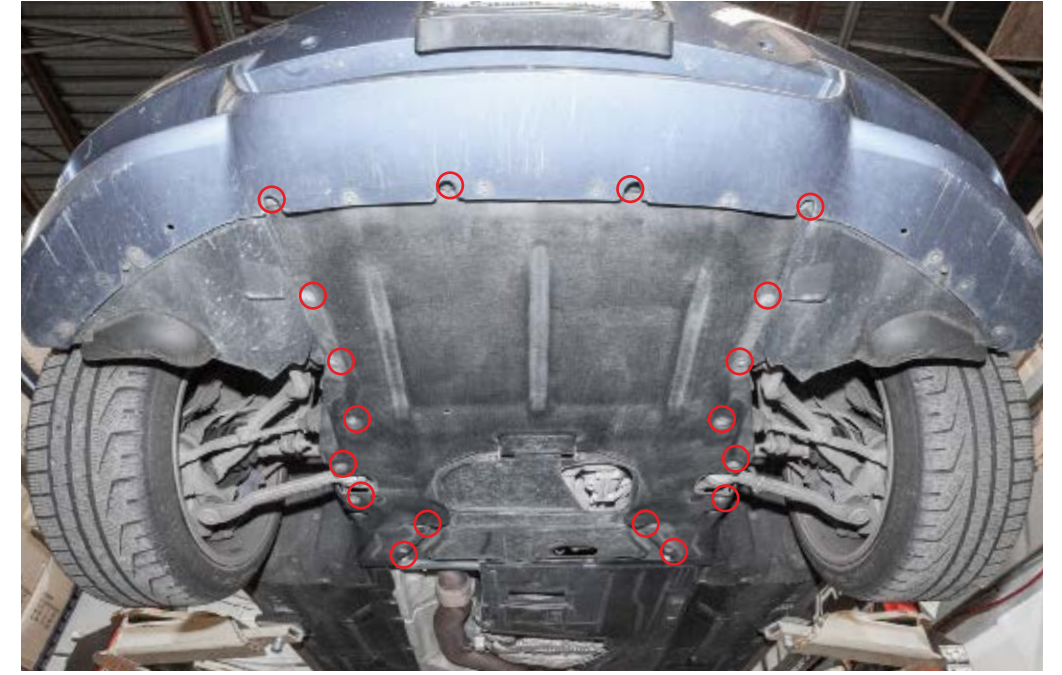
1. 8mm Hex
2. 16mm Hex
3. T25 Torx
4. Flat head screw driver

NOTES

Vehicle used in this guide is a 2016 BMW 335i Xdrive . Always make sure the car is safe to work on. Do not work on a hot motor. We do not accept any liability for incorrect installation or damage during the install.

STEP 1

Remove the 8mm hex screws to slide out the fabric cover



STEP 2

You will need to use the flat head screw driver to pry the clips outward until they click and remain loose. They are difficult to remove and requires some patience and finesse. Pull hoses slightly off FMIC



STEP 3

Unclip tabs indicated by the circles.

Remove the T25 torx screws.

To remove you will have to angle the intercooler and push the plastic cover down indicated by the white arrows



STEP 4

Intercooler removed

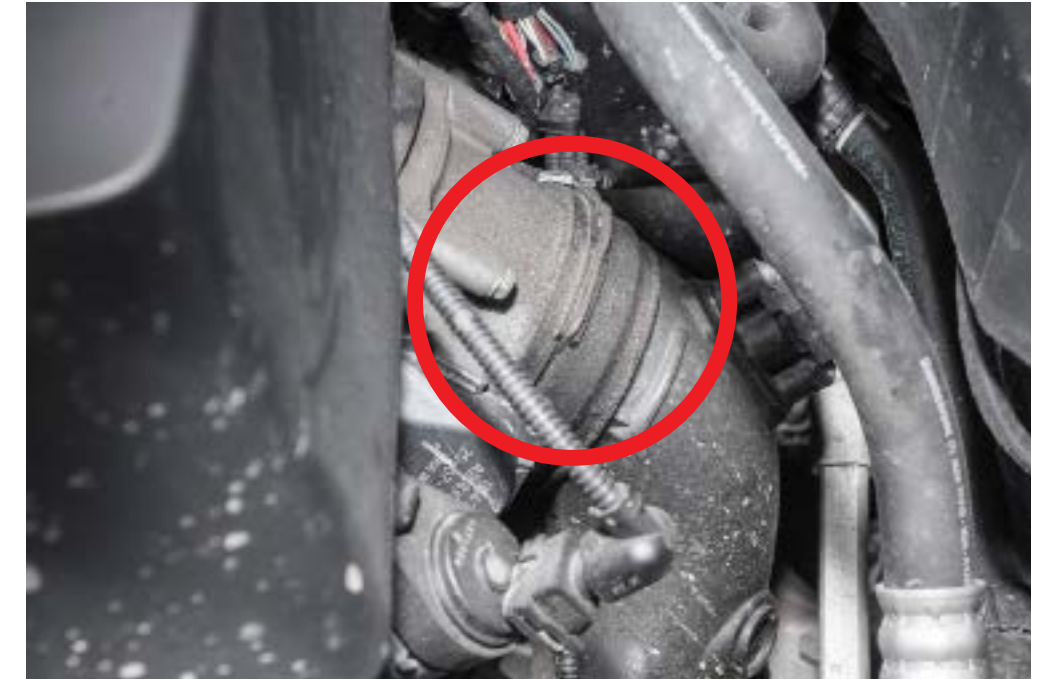


NOTE: IF YOU HAVE THE CHARGE PIPE NOW IS THE TIME TO REMOVE THE OEM AND INSTALL THE CTS-IT-805
IF YOU DO NOT HAVE THE CHARGE PIPES SKIP TO STEP 14

STEP 5

At the top of the engine bay remove the engine cover

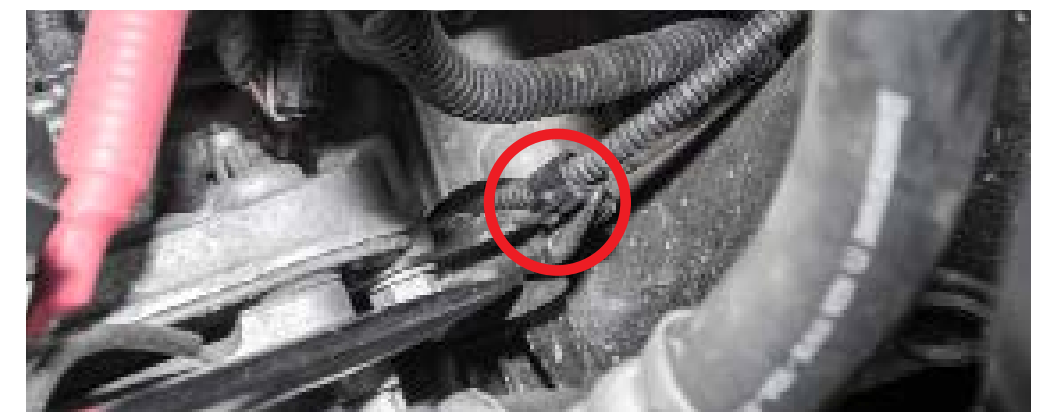
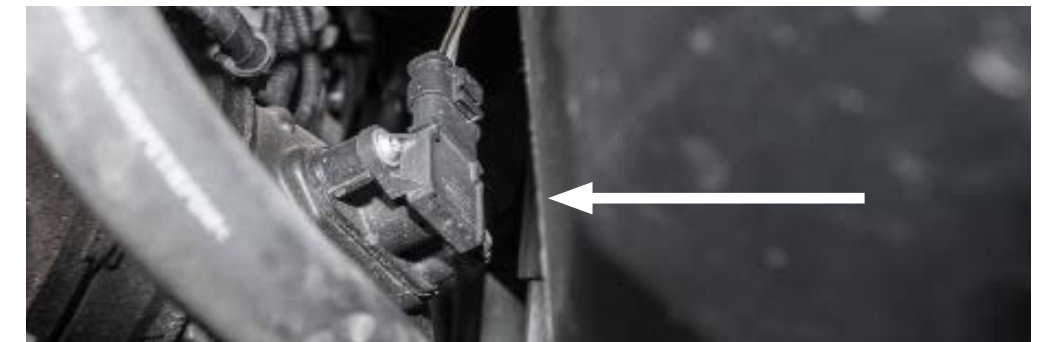
Pry the shown clip to remove charge pipe from the engine



STEP 6

Around on the side of the charge pipe disconnect the MAF sensor indicated in white

There is also a clip lower down that needs to be removed shown in red



STEP 7

From top of the engine bay remove the OEM charge pipe.

This may require some shifting and twisting of the pipe, it isn't easy to get out.



STEP 10

Install the the OEM O-ring into the top end on the charge pipe



STEP 8

IMPORTANT: Make sure to tighten the nut if you are not using meth.



STEP 11

Install OEM O-ring into the bottem end of the charge pipe

You can insert the OEM clip at this time as well



STEP 12

Unscrew the MAF from the stock charge pipe and install on CTS charge pipe



STEP 13

Next, from underneath add the silicone cuplar and clamps and the other end of the charge pipe.

DO NOT tighten clamps yet, as you will need to position the pipe to line up to fit onto the intercooler



STEP 12

Insert charge pipe from the top of the engine bay

Insert OEM clip at this time and reconnect the MAF sensor



STEP 14

Install the CTS intercooler

You will have to pull the plastic cover down and angle the intercooler to help get it in smoothly



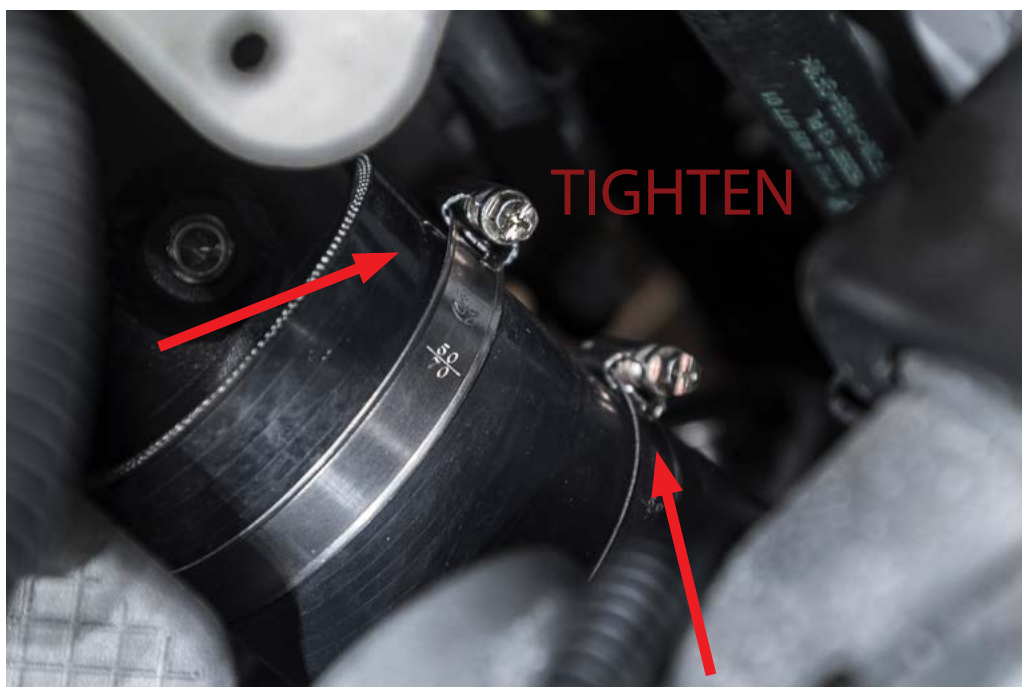
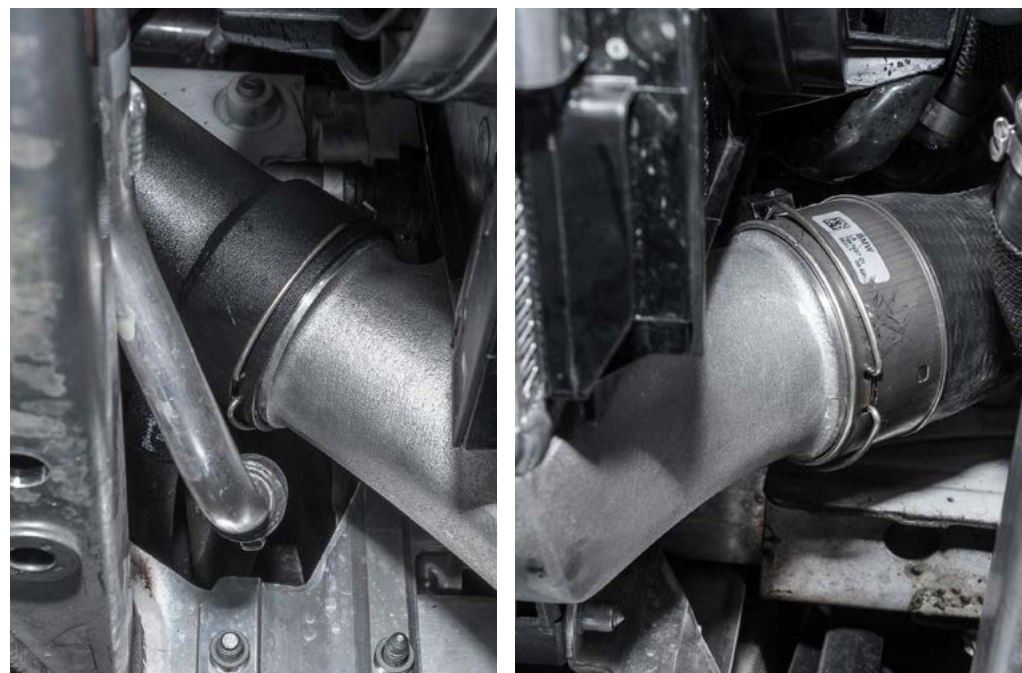
STEP 15

Line up and install pipes onto the intercooler

Use a stand to help keep the intercooler in place if need be.

Re-install the T25 torx screw, and remove the stand

Make sure all the clamps are tight



STEP 16

Re install all the 8mm hex screws and you are done underneath.



YOU ARE DONE