



INSTALLATION GUIDE

CTS Turbo 8V RS3 Intake
CTS-IT-255R



20630 Mufford Crescent, Unit #309
Langley, British Columbia V2Y 2V9

www.CTSTURBO.com

WHAT IS INCLUDED

1. Heatshield
2. Intake Pipe
3. Air Filter
4. Silicone Couplers
5. Hose Clamps & Hardware



TOOLS REQUIRED

1. T25 Torx
2. 7mm, 8mm Sockets
3. Pliers (for OE hose clamps)
4. 2.5mm Allen key (Included)

NOTES

Vehicle used in this guide is a 2018 Audi RS3. Always make sure the car is safe to work on. Do not work on a hot motor. We do not accept any liability for incorrect installation or damage during the install.

STEP 1

Using the supplied hardware assemble the airbox and install the weather stripping.



STEP 2

Remove the engine cover



STEP 3

Remove the constant tension clamp on the passenger side (slide it back)

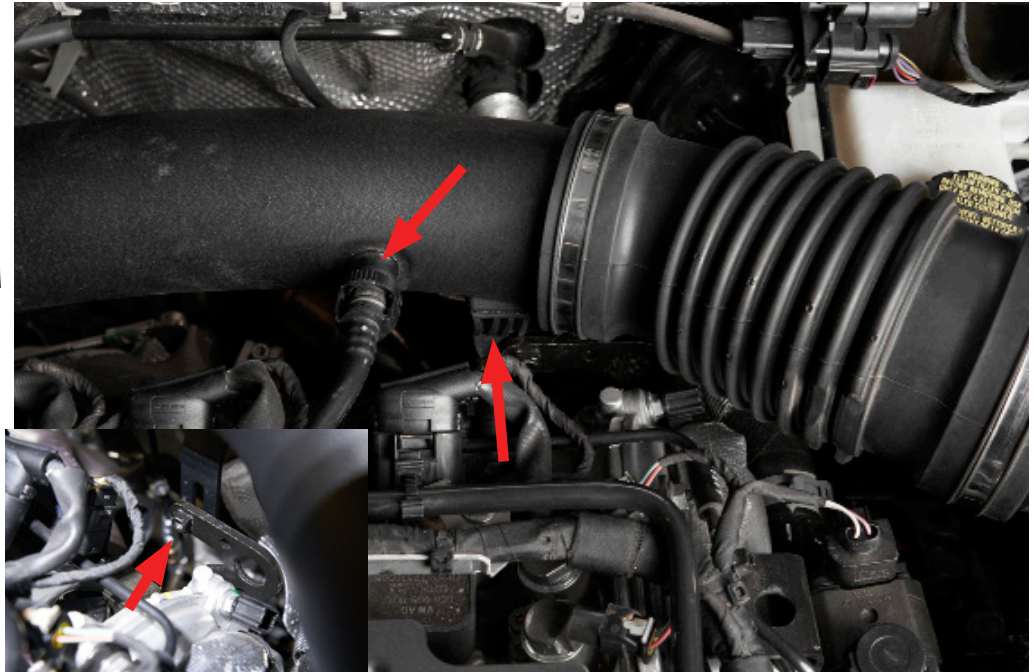
Loosen the Hose clamp on the drivers side (7mm)



STEP 4

Disconnect the connection in the OEM pipe

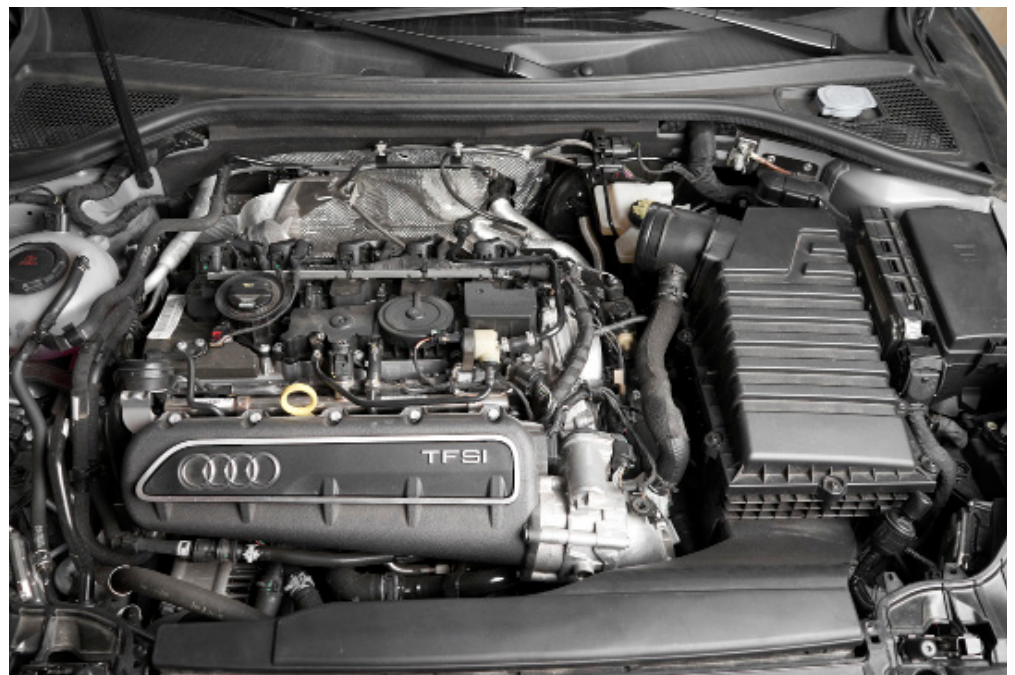
Remove the T-25 Torx in the bracket behind/under the OEM pipe



STEP 5

Remove the OEM pipe

Loosely Re-Install the T-25 torx back into the bracket you just removed



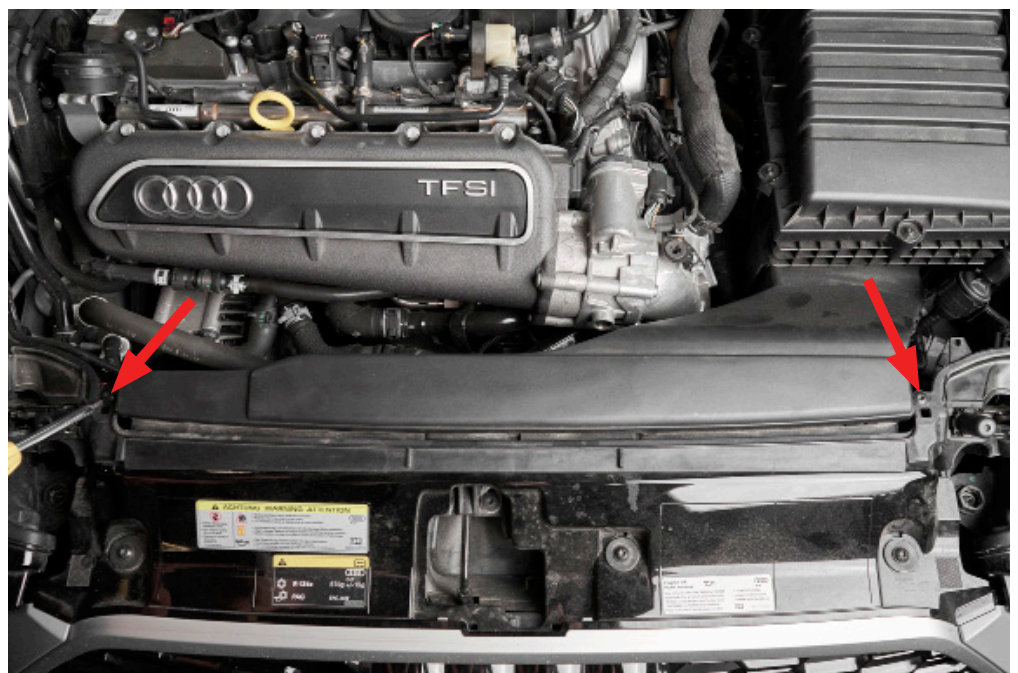
STEP 6

Release the constant tension clamp on the connection shown, remove hose from the airbox



STEP 7

Remove the two T25 from the front air-scoop



STEP 8

Disconnect the sensor that is clipped to the airbox



STEP 9

Remove Airbox

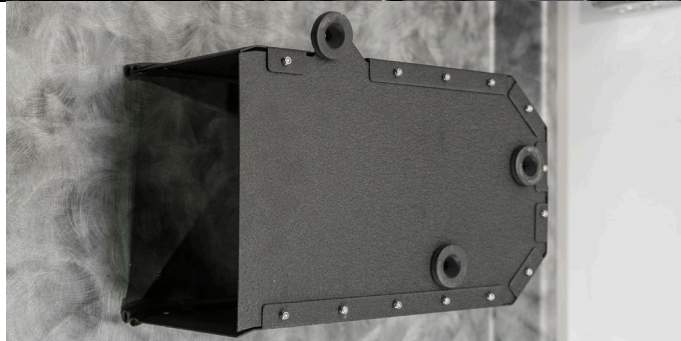
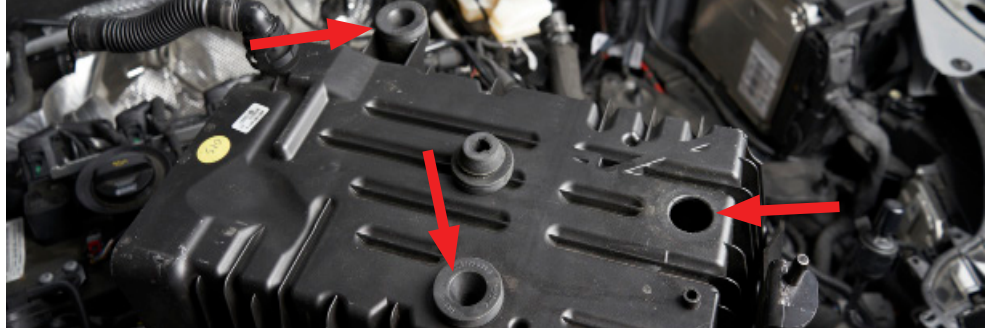
**Pull up on each corner, there are three rubber grommets that hold the entire assembly to the base



STEP 10

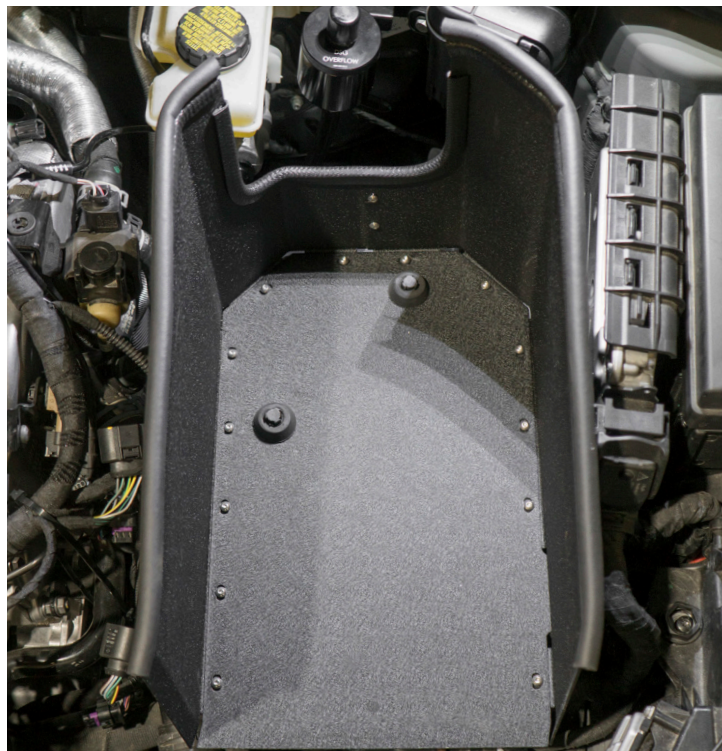
Transfer the grommets from the OEM airbox to the CTS Airbox

**when installing the grommets, a tiny bit of WD-40 helps immensely.



STEP 11

Install the CTS Airbox



STEP 12

Install the reducer silicon coupler on the turbo inlet.
Install lower hose clamp on the turbo inlet.

**A little bit of WD-40 on the silicone couplers will greatly help the install



STEP 13

Install the intake pipe, filter and silicone coupler together.

Install the brass barb fitting for the for the EVAP breather.



STEP 14

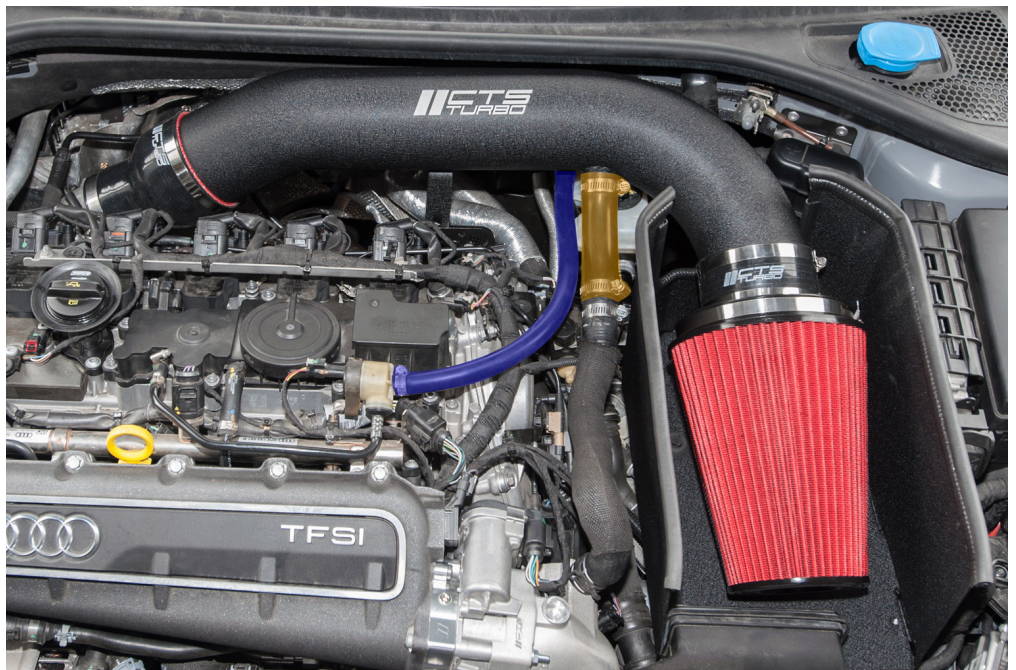
Re-install the front air-duct



STEP 15

Install the intake pipe along with the filter.

Connect both the EVAP and diverter silicone hoses .



STEP 16

Make sure to install and tighten the T25 bolt to the intake bracket and mount

**STEP 17**

Check to see all connections are tight and install Engine Cover

Done!

