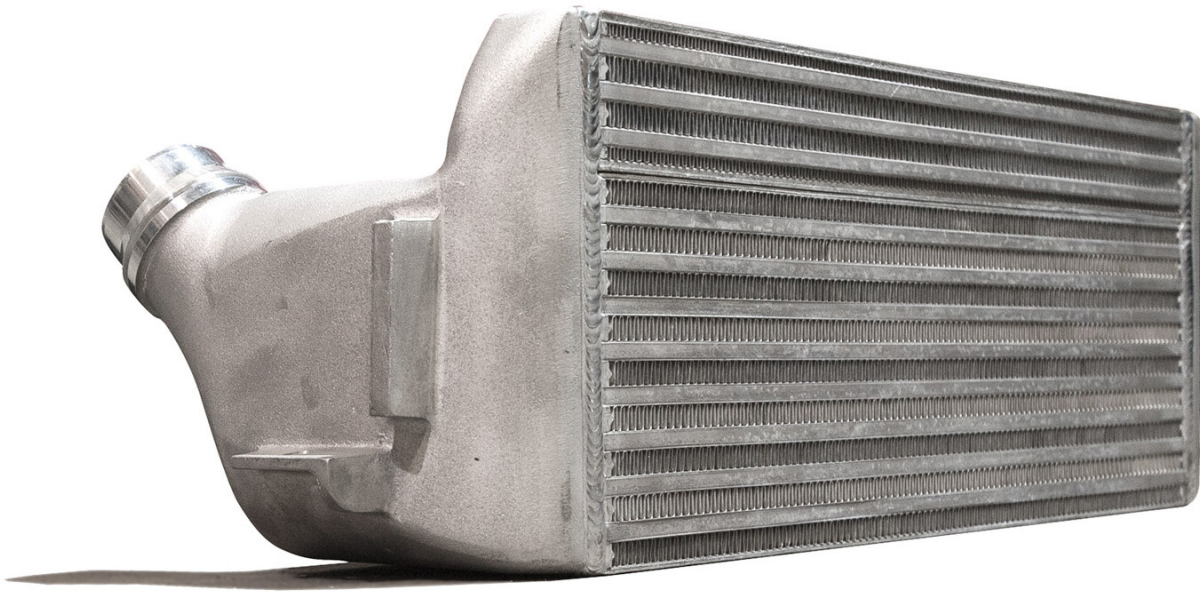




INSTALLATION GUIDE

CTS Turbo FMIC BMW N55 Downpipe
Plus Charge Pipe install



20630 Mufford Crescent, Unit #309
Langley, British Columbia V2Y 2V9

www.CTSTURBO.com

TOOLS REQUIRED

1. 8mm Hex
2. 16mm Hex
3. T25 Torx
4. Flat head screw driver

NOTES

Vehicle used in this guide is a 2018 BMW M2 . Always make sure the car is safe to work on. Do not work on a hot motor. We do not accept any liability for incorrect installation or damage during the install.

STEP 1

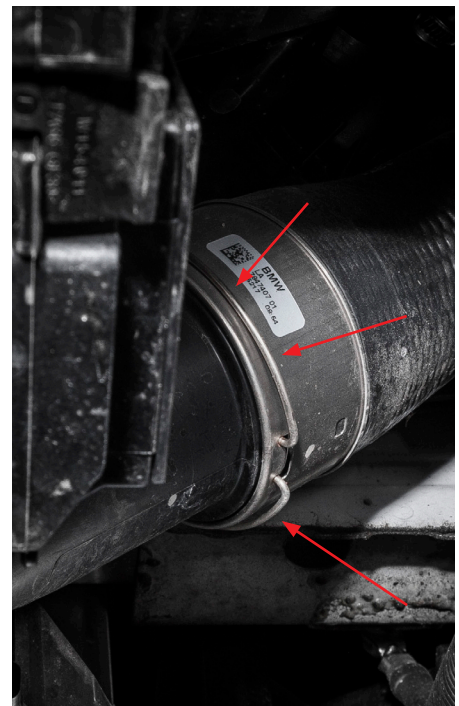
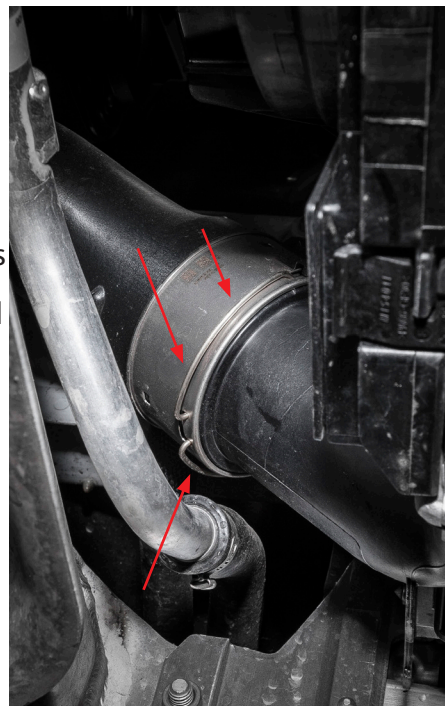
Remove the 8mm hex screws to slide out the plastic cover

*You may choose to remove the metal under tray to gain easier access. 16mm hex required



STEP 2

You will need to use the flat head screw driver to pry the clips outward until they click and remain loose. They are difficult to remove and requires some patience and finesse. Pull hoses slightly off FMIC

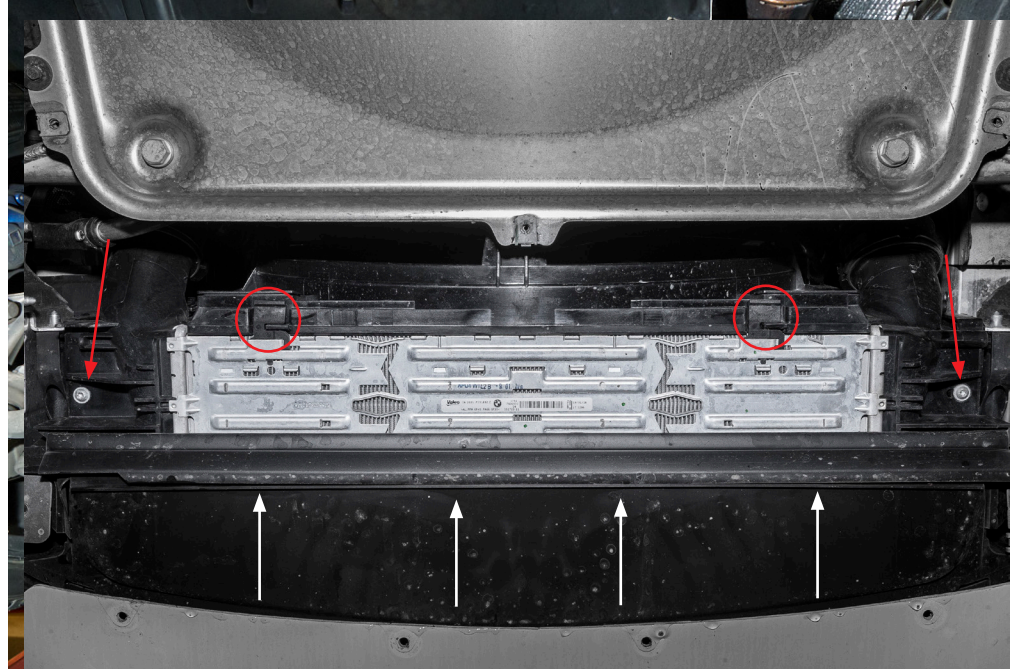


STEP 3

Unclip tabs indicated by the circles.

Remove the T25 torx screws.

To remove you will have to angle the intercooler and push the plastic cover down indicated by the white arrows



STEP 4

Intercooler removed



NOTE: IF YOU HAVE THE CHARGE PIPE NOW IS THE TIME TO REMOVE THE OEM AND INSTALL THE CTS-IT-810
IF YOU DO NOT HAVE THE CHARGE PIPES SKIP TO STEP 14

STEP 5

At the top of the engine bay remove the engine cover

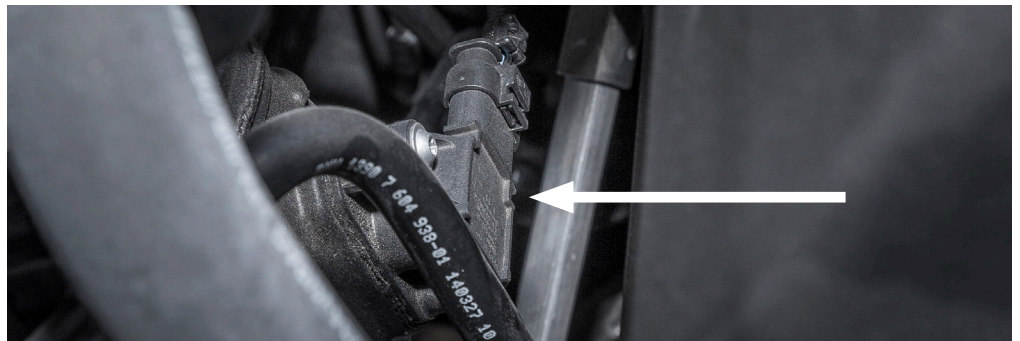
Pry the shown clip to remove charge pipe from the engine



STEP 6

Around on the side of the charge pipe disconnect the sensors indicated in white

There is also a clip lower down that needs to be removed shown in red



STEP 7

From underneath the car remove the OEM charge pipe.

This may require some shifting and twisting of the pipe but should be easy to remove.

**STEP 8**

IMPORTANT: Make sure to tighten the nuts if you are not using meth.



STEP 9

Install the OEM metal clips onto the charge pipes



STEP 10

Install the the OEM O-ring into the bottom of the chargepipe where it will fit onto the intercooler



STEP 11

Install OEM o-ring into the top end of the charge pipe



STEP 12

Unscrew the MAF from the stock charge pipe and install on CTS charge pipe



STEP 13

Install the top part of the charge pipe from underneath

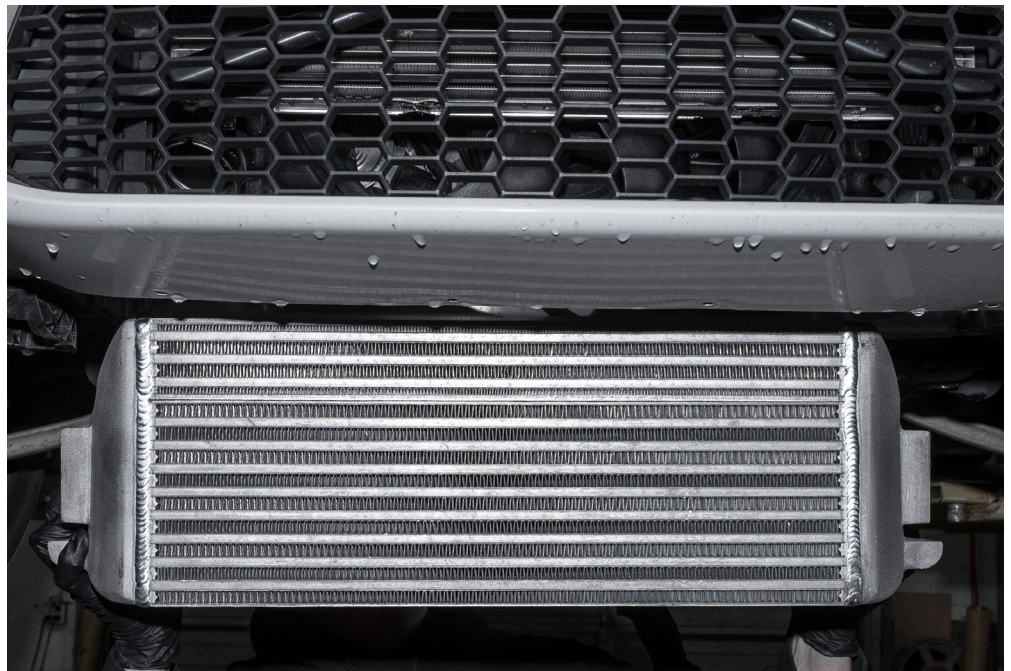
Next, add the silicone cuplar and clamps and the other end of the charge pipe.

DO NOT tighten clamps yet, as you will need to position the pipe to line up to fit onto the intercooler

**STEP 14**

Install the CTS intercooler

You will have to pull the plastic cover down and angle the intercooler to help get it in smoothly



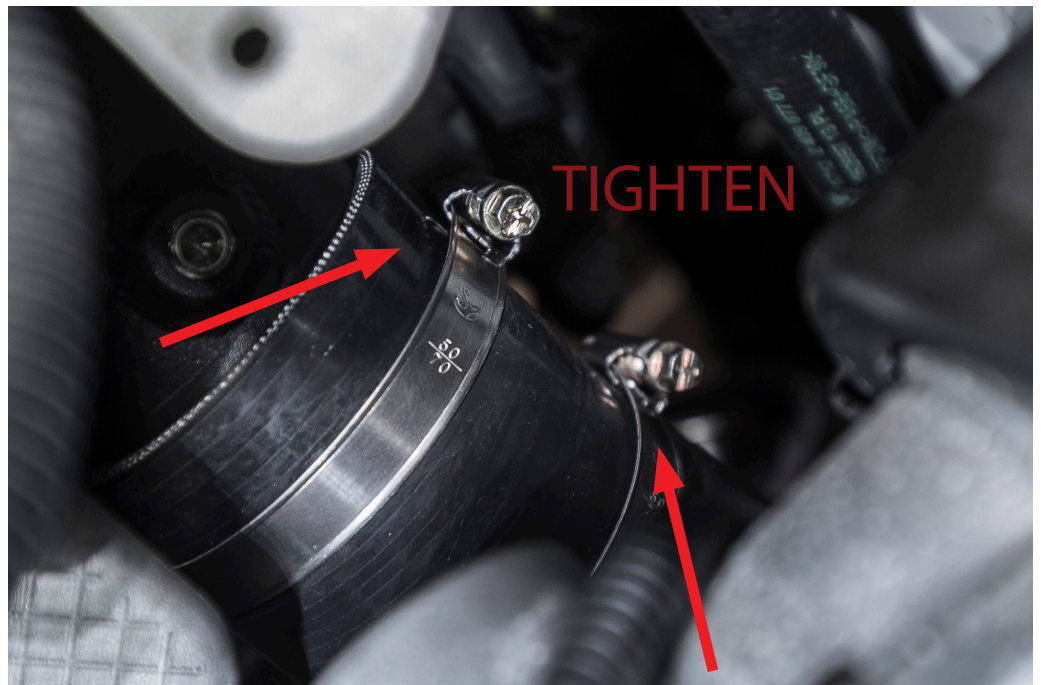
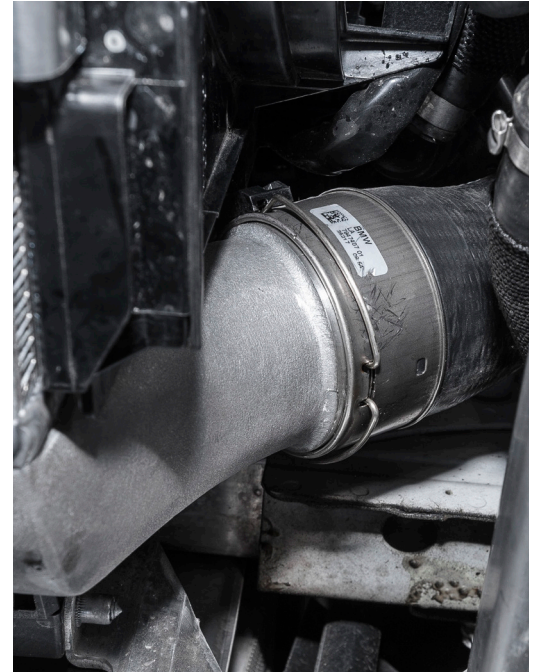
STEP 15

Line up and install pipes onto the intercooler

Use a stand to help keep the intercooler in place if need be.

Re-install the T25 torx screw, and remove the stand

Make sure all the clamps are tight

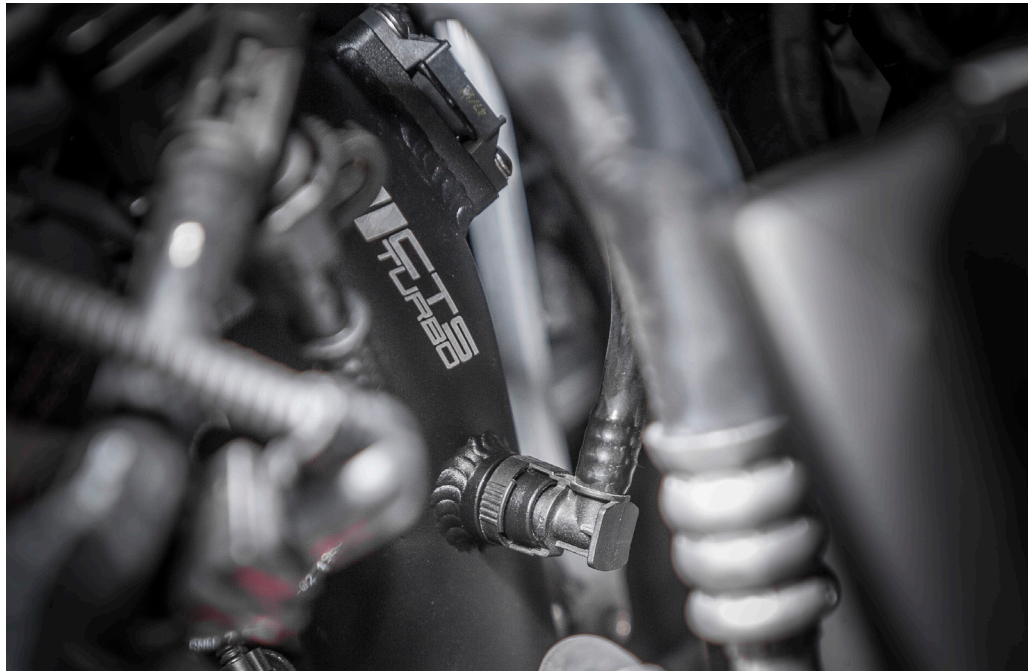


STEP 16

Re install all the 8mm hex screws and you are done underneath.

**STEP 17**

Lastly, make sure to reconnect the sensors and check the clamp is tight.



Reinstall the engine cover and you are done!

